

TYPE-L Lab Ship

Lab Ship

400 Tons 5,600 cubic meters

Dimensions:

5m by 5m Ring Cross Section

35 m Radius

Crew:

Captain/pilot, Navigator, Medic,
2 Engineer.

Fuel: 88 tons (2 parsec jump)

Drives:

One Deltic Mark 1101d fusion
power plant, driving two General
Products Mk 1088 Model 2
Jump Drive and two LSP Red D
2G thruster maneuver drives.

Computer:

LSP Model 2 Mk 1100

Capacity:

21 Tons Cargo

13 passengers

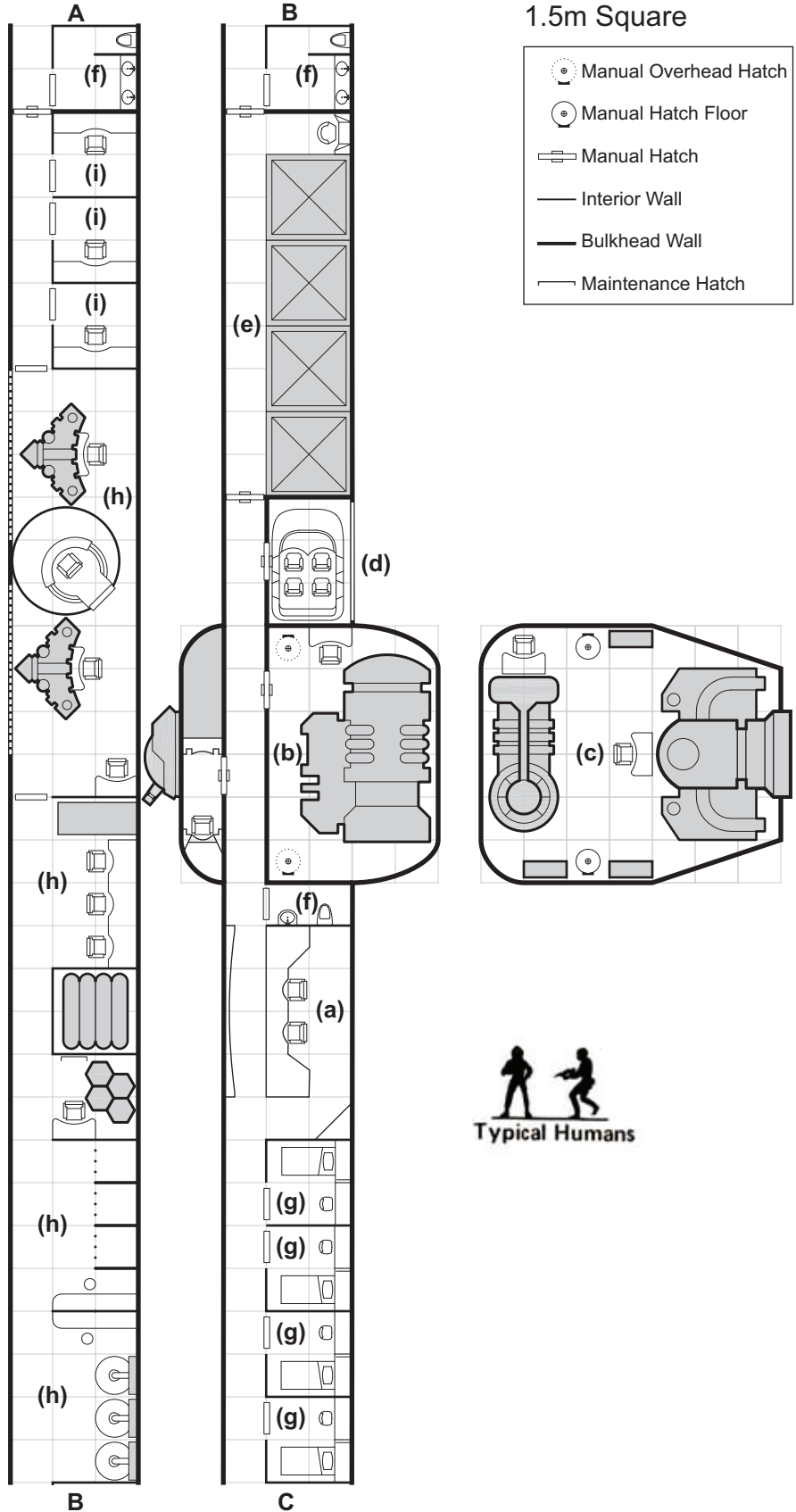
100 ton Configurable Lab Space

Small Craft:

Probe Drones, Pinnacle

KEY

- a- Bridge
- b- Jump Drive
- c- Power Plant,
Maneuver Drive
- d- Air/Raft
- e- Cargo
- f- Fresher
- g- Staterooms
- h- Labs
- i- Offices

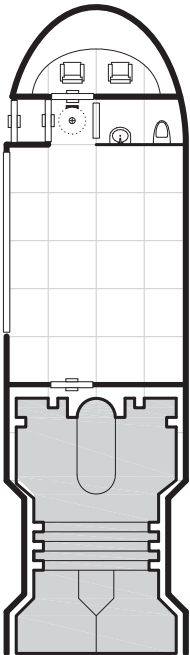
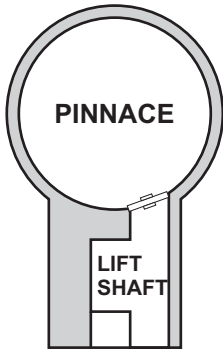


TYPE-L Lab Ship

KEY

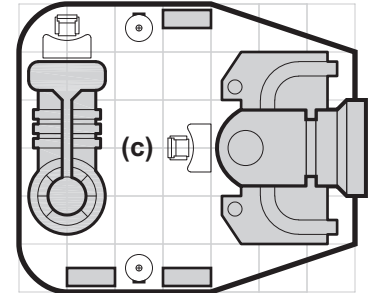
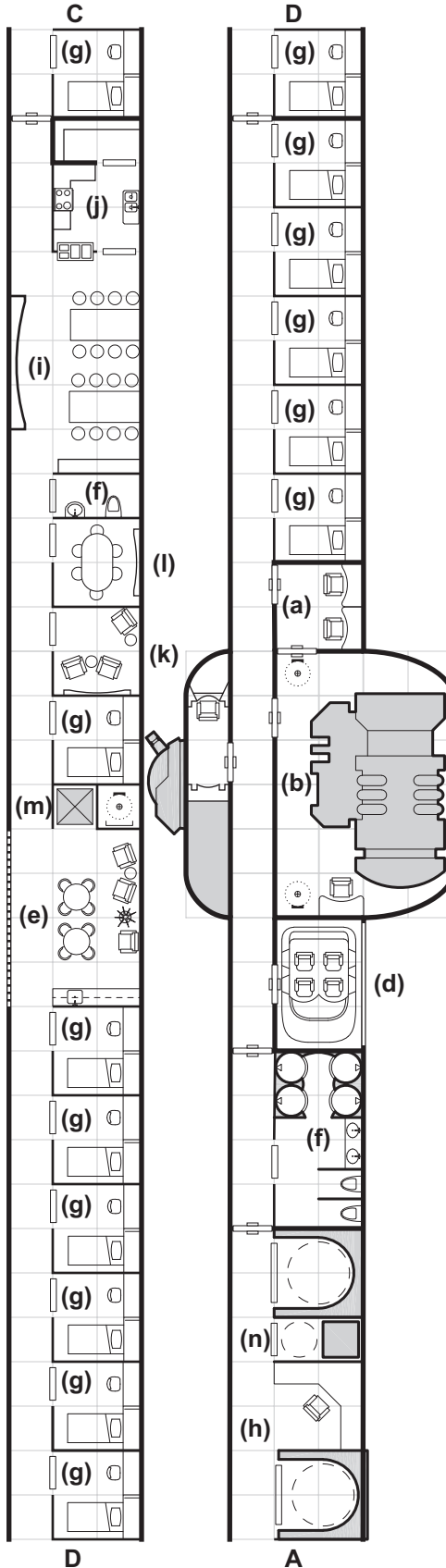
- a- Auxiliary Bridge
- b- Jump Drive
- c- Power Plant, Maneuver Drive
- d- Air/Raft
- e- Lounge/Reception
- f- Fresher
- g- Staterooms
- h- Labs
- i- Mess Hall
- j- Kitchen
- k- Officers Lounge
- l- Conference Room
- m-Lift to Pinnacle
- n- Probe Control

DOCKING RING

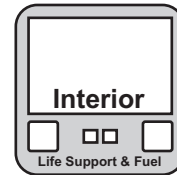


1.5m Square

- Manual Overhead Hatch
- Manual Hatch Floor
- Manual Hatch
- Interior Wall
- Bulkhead Wall
- Maintenance Hatch



Ring Structure Side View



TYPE-L Lab Ship

Far Corsair			Tons	Price
Hull	400 tons	8 Hull 8 Structure		16,000,000
Armor	None			
Jump Drive-D		Jump-2	25	40,000,000
Maneuver Drive-D		Thrust-2	7	7,000,000
Power Plant-D			13	32,000,000
Bridge			20	20,000,000
Computer	Model 2	Rating 10		160,000
Electronics	Advanced Sensors	+1 DM	3	2,000,000
Weapons	Hard Point #1 Hard Point #2			
Fuel	88 Tons	One Jump-2 and Two weeks of operation	88	
Cargo			21	
Staterooms	18 Single		18	9,000,000
Extras	15 Prob Drones Ship's Locker Lab Space Pinnacle		3 100 40	1,500,000 20,000,000
Software	Jump Control/2 Maneuver/0 Library	10 Rating 0 Rating 0 Rating		200,000 0 0
Maintenance Cost (Monthly)				10,490
Life Support Cost (Monthly)				39,000
Total Tonnage and Cost			400	125,874,000

Based on a 400-ton hull, the Type L Lab Ship is designed for scientific research. Eighteen staterooms provide quarters for the crew of five (pilot, navigator, medic and two engineers) plus scientific and research personnel as necessary. The lab ship is not streamlined but carries a single pinnacle with provisions for landing an ATV or an air/raft to a planetary surface. Two air/rafts are included with the lab ship. One hundred tons of space is dedicated to laboratories, with provisions for a wide variety of equipment and research; most equipment in the labs is common and easily purchased.